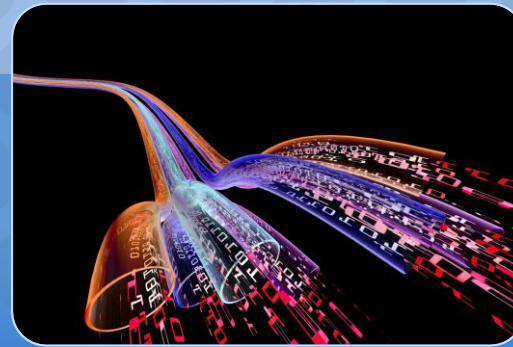




Patient Prescription Assistance Program PPAP

Presented February 13, 2013



Patient Prescription Assistance Program (PPAP)

- **What is the PPAP?**
 - An internet-based program that assists users in accessing free drugs from pharmaceutical companies on behalf of their patients. The PPAP program provides eligibility information and auto-fill forms for most available Patient Prescription Assistance Programs. PPAP also tracks orders/dispensation and provides extensive reporting capabilities.
 - The cost is \$150 per month.
- **What does it do?**
 - Drug list containing over 900 drugs from over 150 manufacturer programs
 - Access to continuously updated product and application information
 - Auto-fill forms reduce time spent on data entry
 - Forms include applications, scripts and labels
 - Automatic refill function along with calculation of refill and renewal dates for existing patients

For more information, please visit www.icc-centex.org or email info@icc-centex.org

Utilization of PPAP Patients

Encounter Type	2011		2012		Total		% Change
	Patient	Enc	Patient	Enc	Patient	Enc	
Clinic	2,032	13,773	2,150	14,785	2,232	28,558	5.8%
Emergency Room	575	1,023	613	1,165	908	2,188	6.6%
Inpatient	168	235	190	276	310	511	13.1%
Other	1,016	4,360	891	2,596	1,272	6,956	-12.3%
Grand Total	2,100	19,391	2,205	18,822	2,288	38,213	5.0%

- 5% change in overall utilization of services by PPAP patients from 2011 to 2012, with Inpatient being the highest at 13.1%

"Other" Encounter Types:
Ancillary Services
Claim-Emergency Room
Claim-Inpatient
Claim-Office
Claim-Outpatient
Claim-based Visits
Community Mental Health Facility
Dental
EMS 911
Home
Hospital Visit (IP/OP) by Provider
Independent Laboratory
Office Visit
Other Facility Visit
Outpatient
Urgent Care Facility

Applications vs. Meds Received

- In combined years, 80% of applications resulted in meds received
- Applications dropped 5% from 2011 to 2012, while Meds received dropped 9%
- The largest reduction in Meds Received was at El Buen with 56%, followed by Seton Topfer (16%) and Seton McCarthy (11%)
- Some facilities do not track meds received since meds are picked up at other locations

2011 Facility	Applications			Meds Received			% Meds Filled
	# Pts	# Applications	AWP Value of	# Pts	# Received	AWP Value	
			Meds			of Meds	
El Buen Samaritano	199	446	\$185,080	171	391	\$163,555	86%
Lone Star Circle of Care	850	2,415	\$2,506,184	643	1,876	\$1,633,210	76%
Peoples Community Clinic	341	1,387	\$2,255,063	292	1,150	\$1,609,854	86%
Project Access	50	69	\$48,947	0	0	\$0	0%
Samaritan Health Ministries	202	1,244	\$536,210	194	1,194	\$531,034	96%
Seton Kozmetsky	585	2,843	\$1,786,415	527	2,565	\$1,553,624	90%
Seton McCarthy	589	3,541	\$2,052,119	448	2,884	\$1,678,615	76%
Seton Smithville	14	49	\$20,892	2	6	\$1,781	14%
Seton Topfer	423	2,333	\$1,637,325	346	2,037	\$1,460,006	82%
WCCHD	9	45	\$15,172	1	1	\$28	11%
Total	3,262	14,372	\$11,043,407	2,624	12,104	\$8,631,707	80%

2012 Facility	Applications			Meds Received			% Meds Filled
	# Pts	# Applications	AWP Value of	# Pts	# Received	AWP Value	
			Meds			of Meds	
El Buen Samaritano	90	286	\$142,534	75	261	\$119,074	83%
Lone Star Circle of Care	793	2,415	\$2,478,725	642	1,956	\$1,776,446	81%
Peoples Community Clinic	339	1,542	\$1,295,863	299	1,184	\$1,095,381	88%
Project Access	31	53	\$60,279	1	1	\$871	3%
Samaritan Health Ministries	230	1,275	\$611,113	0	0	\$0	0%
Seton Kozmetsky	598	2,901	\$1,776,109	540	2,681	\$1,559,703	90%
Seton McCarthy	502	2,755	\$2,021,996	398	2,303	\$1,381,817	79%
Seton Smithville	178	1,015	\$645,001	134	807	\$460,096	75%
Seton Topfer	351	1,924	\$1,162,261	291	1,703	\$1,020,475	83%
WCCHD	1	14	\$3,177	0	0	\$0	0%
Total	3,113	14,180	\$10,197,057	2,380	10,896	\$7,413,863	76%

Combined Facility	Applications			Meds Received			% Meds Filled
	# Pts	# Applications	AWP Value of	# Pts	# Received	AWP Value	
			Meds			of Meds	
El Buen Samaritano	239	732	\$327,614	202	652	\$282,629	85%
Lone Star Circle of Care	1,247	4,830	\$4,984,909	968	3,832	\$3,409,657	78%
Peoples Community Clinic	452	2,929	\$3,550,926	383	2,334	\$2,705,235	85%
Project Access	74	122	\$109,226	1	1	\$871	1%
Samaritan Health Ministries	293	2,519	\$1,147,324	194	1,194	\$531,034	66%
Seton Kozmetsky	764	5,744	\$3,562,525	639	5,246	\$3,113,327	84%
Seton McCarthy	700	6,296	\$4,074,114	522	5,187	\$3,060,432	75%
Seton Smithville	180	1,064	\$665,893	134	813	\$461,876	74%
Seton Topfer	519	4,257	\$2,799,586	415	3,740	\$2,480,481	80%
WCCHD	10	59	\$18,349	1	1	\$28	10%
TOTALS*	4,478	28,552	\$21,240,465	3,459	23,000	\$16,045,570	77%

Meds Average

Facility	2011	2012	% Change
El Buen Samaritano	\$418.30	\$456.22	9%
Lone Star Circle of Care	\$870.59	\$908.20	4%
Peoples Community Clinic	\$1,399.87	\$925.15	-34%
Project Access		\$870.90	
Samaritan Health Ministries	\$444.75		
Seton Kozmetsky	\$605.70	\$581.76	-4%
Seton McCarthy	\$582.04	\$600.01	3%
Seton Smithville	\$296.77	\$570.13	92%
Seton Topfer	\$716.74	\$599.22	-16%
WCCHD	\$27.69	\$0.00	-100%
Total	\$713.13	\$680.42	-5%

- Average value of meds received overall fell 5% from \$713 in 2011 to \$680 in 2012.

Top 5 Prescriptions by Year

Year	Medication Description	Count
2011	metformin 1,000 mg Tab	245
	Accu-Chek Aviva Strips	119
	Flonase 50 mcg/Actuation Nasal Spray	112
	lisinopril 20 mg Tab	101
	Actos 15 mg Tab	92
2011 Total All Meds		12,104
2012	Lipitor	598
	Crestor	432
	Hydrocodon-Acet Aminophn 10-325	372
	Advair Diskus	352
	Viagra	293
2012 Total All Meds		10,896

- Higher counts for each of the top 5 meds, correlated with lower overall counts in applications in 2012 may indicate that the clinics are focusing more on specific meds.